

 MINMOTE x *Ingrid Raadim*

ALPENGLLOW JUMPER

MM 03-03C | SOFT



@minmote | @ingridraadim | #alpeglødgenser | #alpenglowjumper

ALPENGLOW JUMPER

DESIGN

Ingrid Raadim x House of Yarn x Min Mote

YARN

SOFT 50 % alpaca, 50 % acrylic, 50 gram = ca 90 metres

SIZES

S (M) L (XL) XXL (XXXL)

NOTE! See GARMENT MEASUREMENTS to find your size

GARMENT MEASUREMENTS

Upper body 106 (117) 126 (137) 143 (151) cm

Full length approx. 65 (65) 66 (67) 67 (68) cm

Sleeves approx. 49 cm or your preferred length

YARN REQUIREMENTS

Colour 1	5 (5) 6 (6) 7 (7) balls
Colour 2	4 (4) 5 (5) 6 (6) balls
Colour 3	1 ball in all sizes
Colour 4	1 (1) 2 (2) 2 (2) balls
Colour 5	1 ball in all sizes

COLOURS

Colour 1	Rose 704
Colour 2	Pink 729
Colour 3	Apple Mint 714
Colour 4	Honeydew 711
Colour 5	White 700

SUGGESTED NEEDLES

5 mm and 6 mm long and short circular needles and DPNs

GAUGE

14 sts x 16 R in pattern on 6 mm needles = 10 x 10 cm

18 sts rib (K1, P1) on 5 mm needles (lying flat) = 10 cm

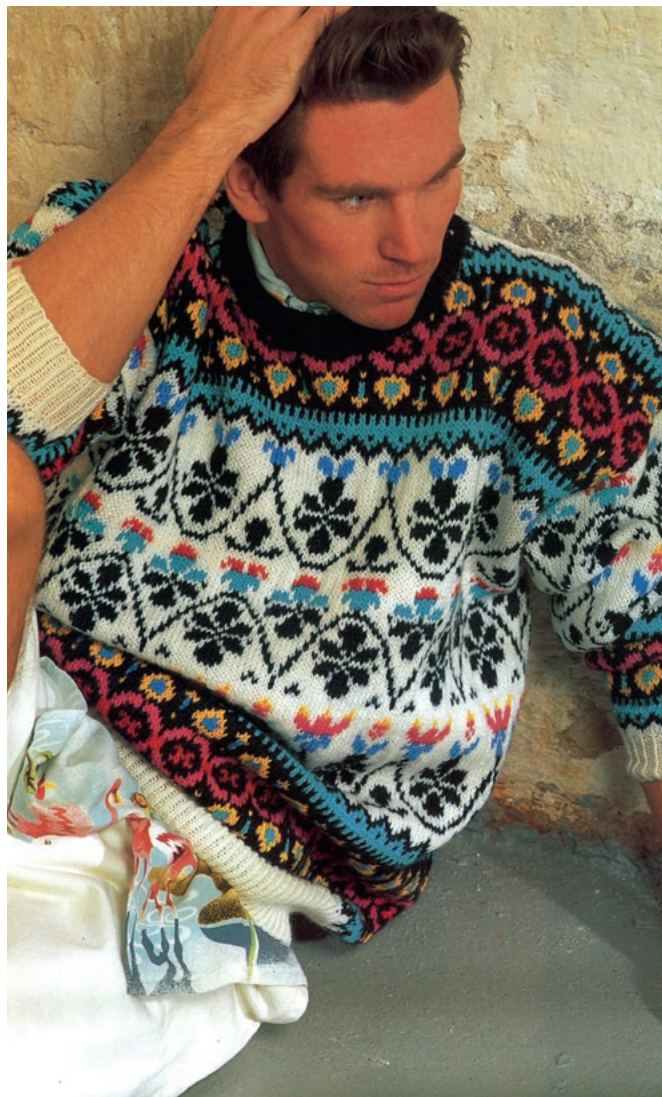
Check your gauge by working a swatch.

Count the number of sts per 10 cm. If you have more sts than suggested, change to a larger needle size. If you have fewer sts change to a smaller needle size.

FIND YOUR SIZE

1. Measure a garment that fits you.
2. Compare your measurements with those in the pattern.
3. Select your size based on the upper body measurements.
4. Body and sleeves may be worked longer or shorter as needed.

Pattern by Ane Kydland Thomassen



This is a redesign of the classic pattern from the Gjestal archives.

ABBREVIATIONS

K = knit, P = purl, st = stitch, R = round/row(s),
DPN = double pointed needles, m = marker,
PM = place marker, RS/WS = right/wrong side

© House of Yarn AS

The copying and publication of materials and patterns, or their use for commercial purposes, is not permitted without prior agreement with House of Yarn AS.

MinMote will receive a commission from all yarn purchases for any garment from the MinMote collection.



BODY

Cast on 148 (164) 176 (192) 200 (212) sts with colour 1 on 5 mm needles. Work a rib (K1, P1) in the round for 4 (4) 5 (6) 6 (7) cm.

PM around 1 st in each side (= m sts) with 73 (81) 87 (95) 99 (105) sts between m sts for each of the front and back pieces.

Change to 6 mm needles and work stocking st according to the diagram. Begin at the arrow for your chosen size at each m st (the colourwork pattern does not align across the m sts but is the same on the front and back pieces).

When the piece measures 58 (58) 59 (60) 60 (61) cm, cast off the middle 15 (15) 15 (17) 17 (17) sts on the front piece for the neckline. Work to end of R. Cut yarn. Work flat as follows (R begins at neckline side of the piece):

Decrease for neckline at the beginning of each R on each side: 2,1,1,1 sts on each side = 123 (139) 151 (165) 173 (185) sts (= 24 (28) 31 (34) 36 (39) sts left for each shoulder on the front pieces, 73 (81) 87 (95) 99 (105) sts for the back piece, and 1 edge st on each side).

Finish working the diagram, then cast off with colour 1.

SLEEVES

Cast on 34 (34) 34 (36) 36 (36) sts with colour 2 on 5 mm needles. Work rib in the round (K1, P1) for 5 cm.

PM around the first st = m st, always worked with the main colour of where you are in the pattern.

Change to 6 mm needles and work 1 R stocking st, **while at the same time** increasing 12 sts evenly spaced = 46 (46) 46 (48) 48 (48) sts.

Continue working according to diagram. Count outwards from the middle of the sleeve to determine where the diagram should begin.

When the sleeve measures 10 cm, increase 1 st on each side of m st. Repeat the increases every 3 (3) 3 (2.5) 2.5 (2.5) cm, for a total of 13 (13) 13 (14) 14 (14) times = 72 (72) 72 (76) 76 (76) sts.

Work the new sts into the pattern as you go.

Work until the sleeve measures 49 cm or to your preferred length.

Cast off.

NOTE! If you want a lining to cover the steeking edge, work 2 cm reverse stocking st (= P on RS, K on WS) flat with colour 1 before casting off.

Work one more sleeve in the same way.

ASSEMBLY

Lightly steam the piece. Mark the sleeve-width on each side.

Using a sewing machine, sew 2 seams with small sts on each side of the m st. Cut up between the seams.

Graft the shoulder seams together and sew in the sleeves.

Make sure mid-sleeve aligns with the shoulder seam.

If you worked for a lining for the steeking edge, sew it down over the edge on the WS.

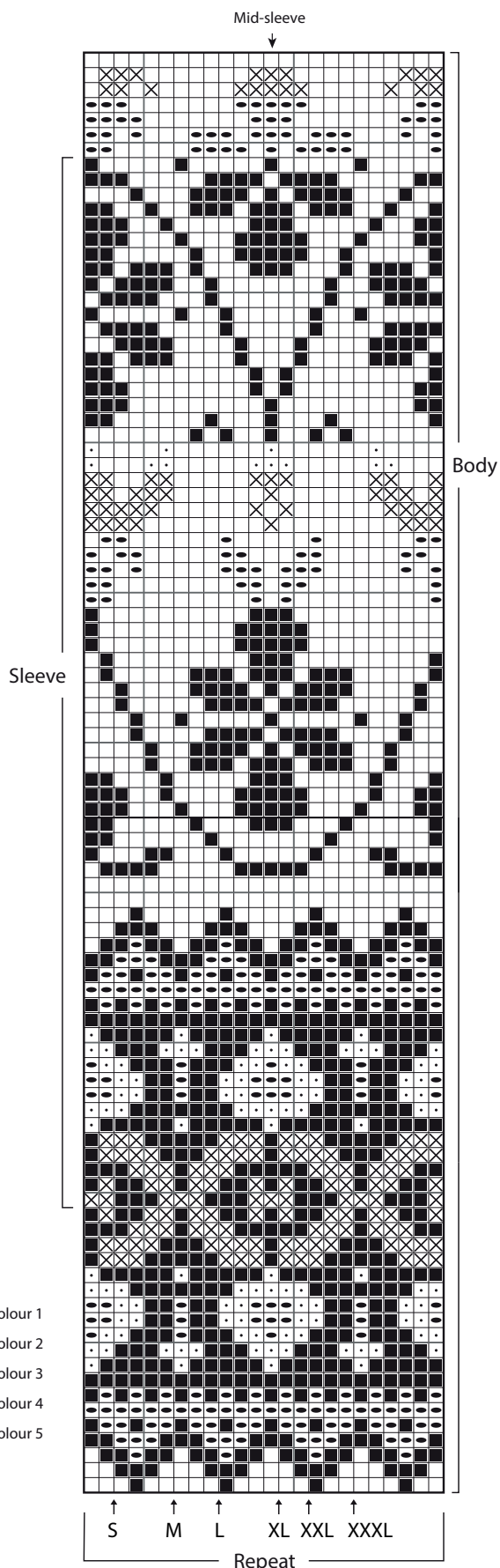
NECKLINE

Pick up 7 sts per 5 cm with colour 2 on 5 mm needles.

St count must be divisible by 2. Work a rib (K1, P1) in the round for 7 cm.

Cast off with K and P sts. Fold the neck double to the WS and sew down with loose stitches.

DIAGRAM



VERTICAL GAUGE

This pattern is based on a gauge of 14 sts horizontal and 16 R vertical = 10 x 10 cm. Not everyone will reach the same gauge both horizontally and vertically.

In order to achieve the correct width for the garment, the horizontal gauge is essential. However, you can easily adjust the length in order to achieve the correct (or preferred) length.

Example: Full length for size M is approx. 65 cm.

The diagram (96 R) makes up one whole length, minus the rib edge. With a gauge of 16 R vertically = 10 cm (= 1.6 R = 1 cm) this will make approx. 60 cm ($96 / 1.6 = 60$).

To achieve the correct full length, the rib edge is worked differently for each size; size M has a 5 cm rib edge ($5 + 60 = 65$).

– If your vertical gauge comes to 15 R = 10 cm, the full length of the diagram will be approx. 64 cm ($96 / 1.5 = 64$), and you may work only 1 R rib edge, or otherwise not work the 7 top R of the diagram and instead keep the 5 cm rib edge.

– If your vertical gauge comes to 17 R = 10 cm, the full length of the diagram will be approx. 56.5 cm ($96 / 1.7 = 56.5$). In this case you may work a 8.5 cm rib edge, or add some extra R to the places where you work either colour 1 or colour 2 on their own.

The same goes for the sleeves: The full length of one sleeve is approx. 49 cm.

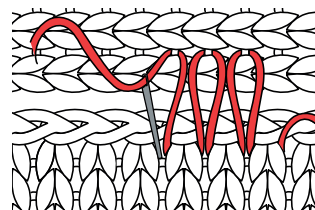
The diagram for the sleeves (70 R) make up one whole length, minus the rib edge ($70 / 1.6 = 43.7$).

In order to achieve the correct length for the sleeves, the rib edge is worked to 5 cm as $43.7 + 5 =$ approx. 49.

– If your vertical gauge comes to 15 R = 10 cm, the full length of the diagram will be approx. 47 cm ($70 / 1.5 = 46.6$), and you will need to either work a 2 – 2.5 cm rib edge or stop earlier in the diagram.

– If your vertical gauge comes to 17 R = 10 cm, the full length of the diagram will be approx. 41 cm ($70 / 1.5 = 41.1$), and you will need to either work an 8 cm rib edge or work further in the diagram.

SEWING IN CAST-OFF SLEEVES



Do you need inspiration for your next knitting project? Check out houseofyarn.no