



DU STORE
ALPAKKA[®]

HOUSE of YARN

LILLEHAMMER '94 JUMPER

DSA 127-02 | STERK



Du Store Alpukka – a part of HOUSE of YARN

DSA 127-02

LILLEHAMMER '94 JUMPER

DESIGN

Margaretha Finseth

YARN

STERK 40 % finest alpaca, 40 % merino wool, 20 % nylon,
50 grams = approx. 137 metres

SIZES

S (M) L (XL) XXL

MEASUREMENTS

Upper body approx. 106 (119) 128 (137) 146 cm
Full length approx. 60 (62) 64 (67) 70 cm
Sleeves approx. 55 cm or your preferred length

YARN REQUIREMENTS

Colour 1	5 (6) 6 (7) 8 balls
Colour 2	6 (7) 7 (8) 9 balls
Colour 3	1 ball in all sizes
Colour 4	1 ball in all sizes
Colour 5	1 ball in all sizes

COLOURS

Colour 1	White 851
Colour 2	Blue 815
Colour 3	Bright Green 903
Colour 4	Red 828
Colour 5	Golden Yellow 835

SUGGESTED NEEDLES

3 mm and 4 mm long and short circular needles and DPNs

GAUGE

22 sts x 27 R stocking st and colourwork on 4 mm needles
= 10 x 10 cm

Check your gauge by working a swatch.

Count the number of sts per 10 cm. If you have more sts than suggested, change to a larger needle size.

If you have fewer sts change to a smaller needle size.

FIND YOUR SIZE

1. Measure a knitted garment that fits you.
2. Compare your measurements with those in the pattern.
3. Select your size based on the upper body measurements.
4. Body and sleeves may be worked longer or shorter as needed.

ABBREVIATIONS

k = knit, p = purl, st = stitch, R = round/row(s),
DPN = double pointed needles, K2 tog = knit 2 together,
tbl = through back loop, m1l/r = make 1 left/right,
m = marker, PM = place marker, RS/WS = right/wrong side



BODY

Cast on 234 (262) 282 (302) 322 sts with colour 2 on 3 mm needles.

Work a rib in the round (K1, P1) for 6 cm, then 1 R stocking st. Change to 4 mm needles. PM in each side with 117 (131) 141 (151) 161 sts on both the front and back pieces.

Work **Diagram I**.

Begin at the arrow for your chosen size at each m (the diagram repeats don't line up across the side m but the pattern will be the same on the front and back pieces).

Continue with **Background** until the piece measures approx. 17 (19) 21 (24) 27 cm. **NOTE!** Finish after 6 R of **Background**.

Read "Length Tip".

Work **Diagram II**, then **Diagram III** (count outwards from the middle to determine where in the diagram to begin at side m so that the middle m are centred back and front).

At the same time when 4 R remain of **Diagram II**, cast off for neckline in front: Cast off the middle 17 (19) 19 (19) 21 sts on the front piece.

© House of Yarn AS

The copying and publication of materials and patterns, or their use for commercial purposes, is not allowed without prior agreement with House of Yarn AS.

Photo: House of Yarn



Continue the pattern as before, working flat. Keep casting off for the neckline at the beginning of every R: 3,3,2,2,1,1,1 (4,3,2,2,1,1,1) 4,3,2,2,1,1,1 (4,3,2,2,2,1,1) 4,3,2,2,2,1,1 sts on each side. **At the same time** when 8 R remain of **Diagram III**, cast off for neckline in back: Cast off the middle 31 (35) 35 (37) 39 sts on the back piece. Finish each side separately, and continue casting off for the neckline at the beginning of every 2 R: 3,2,1 sts = 37 (42) 47 (51) 55 sts for each shoulder when all decreases have been worked. Finish **Diagram III** and end with 1 R stocking st with colour 2. Cast off.

SLEEVES

Cast on 56 (58) 60 (62) 64 sts with colour 2 on 3 mm needles. Work a rib in the round (K1, P1) for 6 cm. Work 1 R stocking st, **while at the same time** increasing 16 sts evenly spaced = 72 (74) 76 (78) 80 sts. Change to 4 mm needles. PM around the first st = m st. Work **Diagram IV** (count outwards from the middle to determine where in the diagram to begin, so that the middle m is mid-top of sleeve). **At the same time** when the sleeve measures approx. 8 cm, **m1l** after the m st and **m1r** before the m st = 2 new sts. Repeat the increase every 4 (4) (3.5) (3.5) 3 cm a total of 12 (13) 14 (15) 16 times = 96 (100) 104 (108) 112 sts. Work **Background** until the sleeve measures approx. 37 cm, finish after R 6 of **Background**. Work **Diagram V**. Continue working with colour 2: 1 R stocking st in the round, then 5 R flat where you P from RS and K from WS = lining. Cast off loosely.

STEERING AND ASSEMBLY

Gently steam the garment. Mark the width of the sleeves on each side. Using a sewing machine, sew 2 tight seams on each side of the side m. Cut up between the seams using scissors (steek). Graft the shoulder seams with mattress sts and sew in the sleeves.

Make sure the middle of the sleeve is aligned with the shoulder seam.

Sew down the lining over the steeking edge on the WS.

NECKLINE

Using 3 mm circular needles and colour 2, pick up 112 (120) 120 120 (128) 128 sts around the neckline. St count must be divisible by 8. PM on each shoulder. Work **Diagram VI**, **while at the same time** decreasing 2 sts on each shoulder on every 3 R (K2 tog tbl before each m, K2 tog after each m). Work the decreases with the colour which best fits with where you are in the pattern. P 1 R with colour 2 = folding edge. Work 14 R stocking st, **while at the same time** increasing 2 sts on each shoulder every 3 R (**m1r**, K1 before each m and K1, **m1l** after each m). Cast off. Fold the edge double to the WS and sew down with loose sts.

LENGTH TIP

This pattern is based on a gauge of 22 st horizontally and 27 R vertically = 10 x 10 cm. Not everyone will achieve the same gauge both horizontally and vertically. In order to achieve the right width for this garment, the horizontal gauge is essential – but the length can be adjusted to reach the correct or preferred length.

Example: The full length for size M is 62 cm. **Diagrams II + III** (115 R in total) make up the upper part of the garment. With a vertical gauge of 27 R = 10 cm (= 2.7 R = 1 cm), this adds up to approx. 43 cm (115 / 2.7 = 42.6). To reach the correct full length, work **Background** until the piece measures 19 cm, as 19 + 43 = 62.

– If your vertical gauge comes to 25 R = 10 cm, the two finished diagrams will come to approx. 46 cm (115 / 2.5 = 46), and you will need to work **Background** until the piece measures 16 cm.

– If your vertical gauge comes to 29 R = 10 cm, the two finished diagrams will come to approx. 40 cm (115 / 2.9 = 39.6), and you would need to work **Background** until the work measures 22 cm.

The same goes for the sleeves; for a men's size the sleeve length is 55 cm. **Diagram V** (48 R) makes up the top 18 cm of the sleeve (48 / 2.7 = 17.7). To reach the correct sleeve length, work **Background** until the sleeve measures 37 cm, as 18 + 37 = 55.

– If your vertical gauge comes to 25 R = 10 cm, **Diagram V** will come to approx. 19 cm (59 / 2.5 = 19.2), and you will need to work **Background** until the sleeve measures 36 cm, not 37 cm as the pattern indicates.

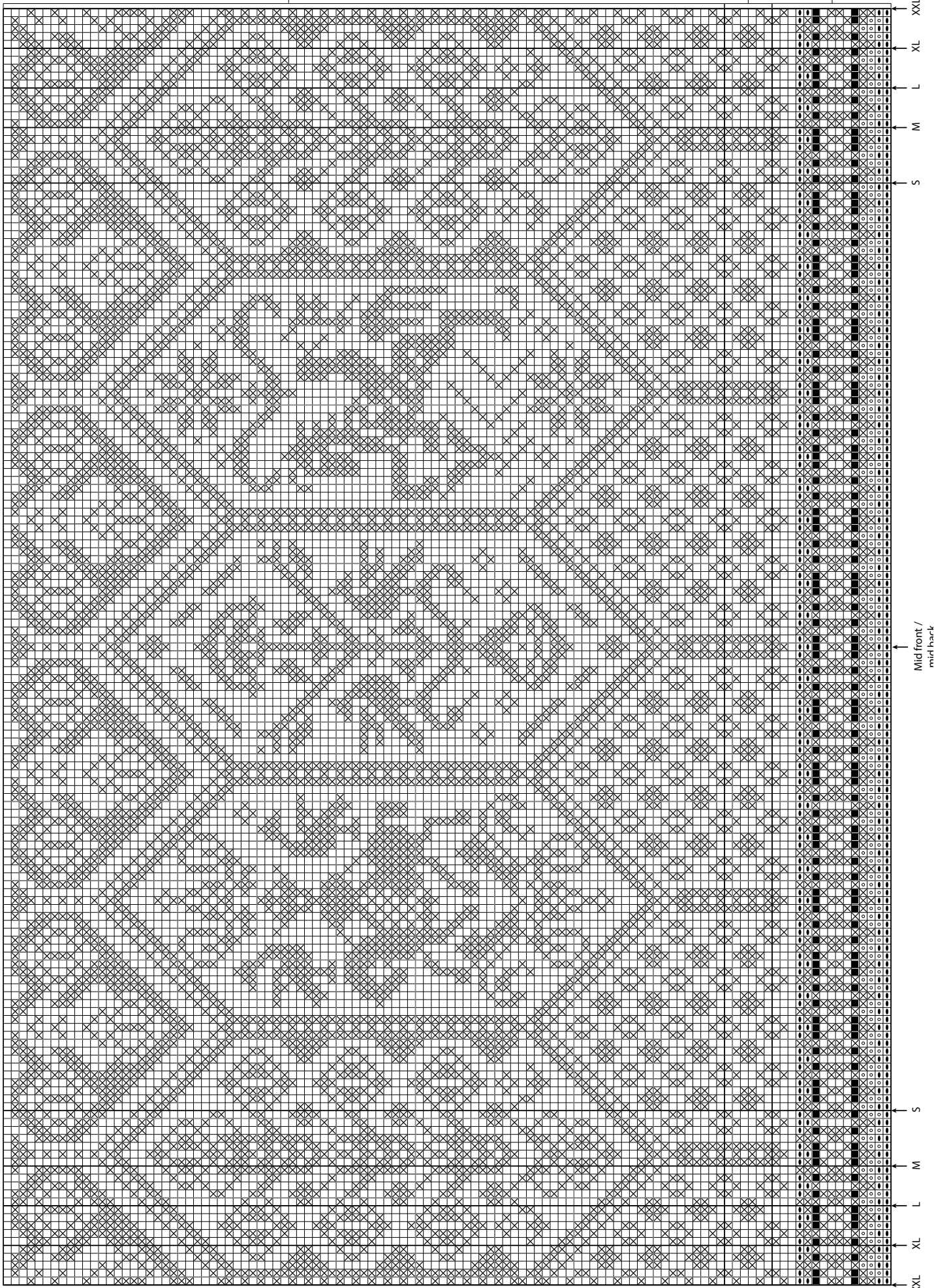
– If your vertical gauge comes to 29 R = 10 cm, **Diagram V** will come to approx. 17 cm (48 / 2.9 = 16.6), and you will need to work **Background** until the sleeve measures 38 cm.

Diagram II

- Colour 1
- ▨ Colour 2
- ▩ Colour 3
- ▧ Colour 4
- Colour 5

Background Repeat

Diagram I



DIAGRAM

Mid-sleeve
Mid-front/back

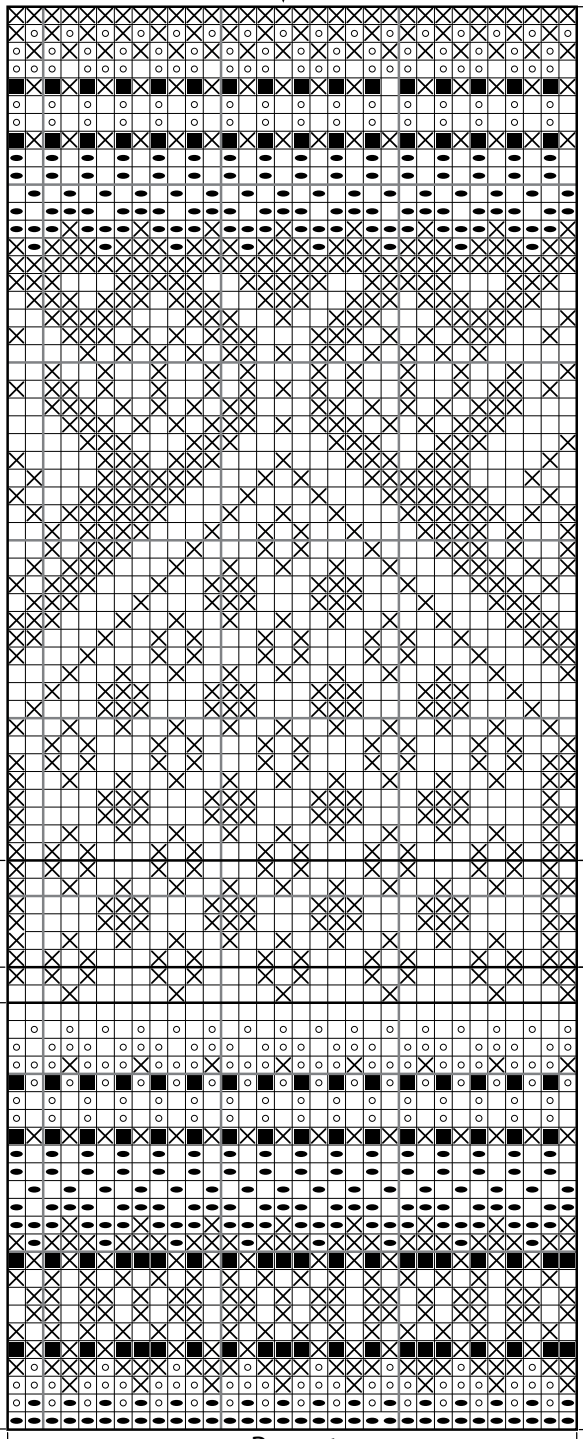


Diagram VI

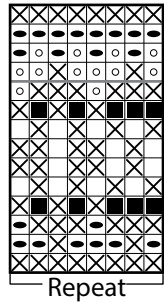


Diagram V

- Colour 1
- ⊗ Colour 2
- Colour 3
- Colour 4
- Colour 5

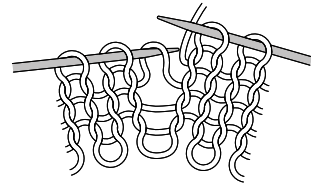
Background sleeve

Repeat

Diagram IV

M1R AND M1L

M1: Pick up the strand between 2 sts, place it on left needle as shown in picture, work through the back loop.



M1r: Pick up strand between 2 sts, place it on left needle as shown in picture, work the front loop.

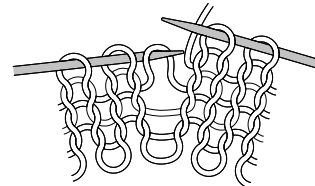


Diagram III

Repeat

Do you need inspiration for your next knitting project? Check out the website houseofyarn.no